



Westgate Townhomes

Mary Esther, FL 32569

Home Features:

- New Construction Spacious Floor Plans
- Quartz Countertops
- GE Stainless Steel Appliances
- Washer & Dryer Hook ups
- Luxury Vinyl Plank Flooring
- Private One Car Garage w/ Opener
- All Electric
- Patio
- Pet Friendly
- Fiber Internet Available
- Large Walk in Closets
- Fully Fire Sprinklered



Community Features:

- Professional Management & Maintenance
- Pest Prevention, Exterior
- Landscaping Service Included
- Trash Included
- 3 miles to Hurlburt Base Entrance
- 3 miles to New Publix Grocery Store
- Security Deposit Alternative Through Obligo

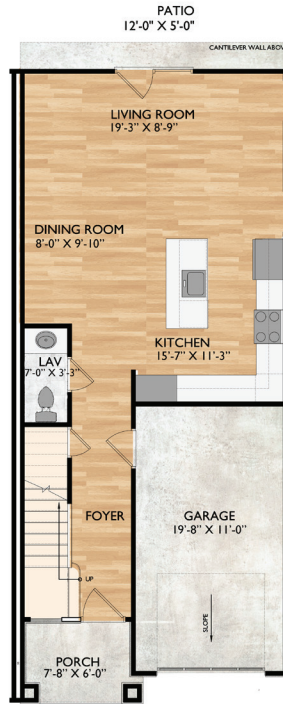


Floor Plans

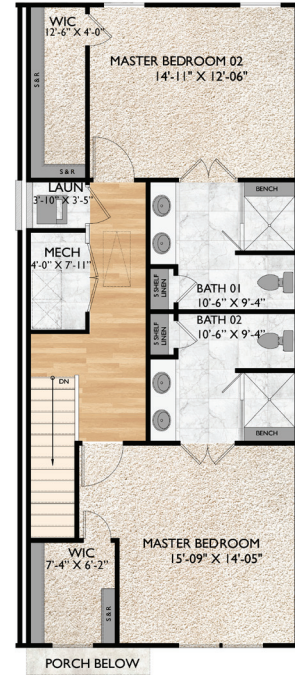
Floor plan measurement and dimensions are approximate and are for illustrative purposes only.

Unit H - Plans

Dual Master Unit
2 Bedroom, 2 Bath



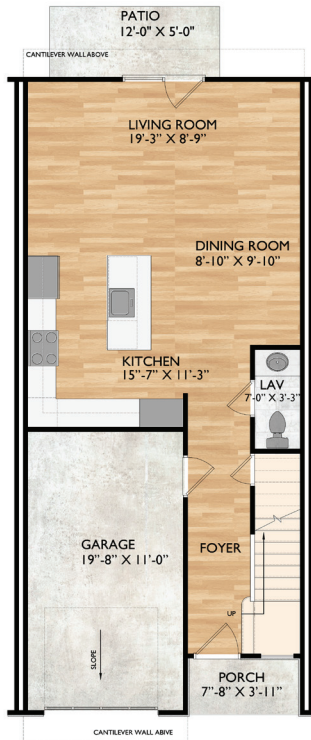
FIRST FLOOR PLAN "DUAL MASTER"
UNIT - H - PLANS



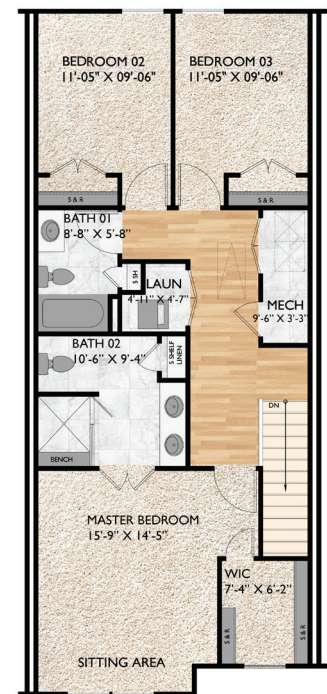
SECOND FLOOR PLAN "DUAL MASTER"
UNIT - H - PLANS

Unit B,D,F - Plans

Traditional
3 Bedroom, 2.5 Bath



FIRST FLOOR PLAN "3 BEDROOM"
UNIT - B,D,F - PLANS



SECOND FLOOR PLAN "3 BEDROOM"
UNIT - B,D,F - PLANS